



Term 1 2022 Issue

# Jieminite Link

CONTACT - CONNECT - CELEBRATE



Dear Parents/Guardians and Jieminites,

A warm welcome and Happy New Year 2022! As we start our new journey in 2022, we are grateful for all our growth, learning and achievements in 2021. Let us enter the New Year with a renewed sense of purpose and mission, and be committed to the well-being and growth of every Jieminite. This year, we are most happy to welcome 7 new classes of Primary 1 pupils to our school.

At Jiemin, we have set ourselves the mission of Nurturing Hearts and Minds. We believe in holistic education, and we will continue to develop and evolve our programmes to nurture our Jieminites. We will focus on the development of their strength of character and support them in their pursuit for academic excellence. Guided by our core values of Responsibility, Respect, Humility, Resilience and Care, we seek the support of parents and the community to collaborate with all of us at Jiemin to bring out the very best in our Jieminites. As the saying goes, it takes a village to raise a child. We thank you and look forward to your support in 2022.

The past 2 years of living with COVID-19 has certainly affected our routines and plans. The pandemic has also provided opportunity for all of us to be resilient as we developed new skills and approaches to ensure that learning and growing continue for all at Jiemin. While technology has been central to many of our plans, the effectiveness of using technology can be amplified when pupils develop positive learning dispositions and have a sense of responsibility for their own learning. We will continue to inculcate positive learning dispositions of “Active Learning”, “Resilience” and “Curiosity”, as well as helping our Jieminites to be familiar with key online learning platforms such as MOE’s Student Learning Space (SLS) and using video conferencing platforms.

Together with Ms Nur Fatimah, Ms Joy Wong, and all staff, we wish you the very best for 2022 and let us strive together towards our vision of being ‘Global Learners, Discerning Citizens’.

Once again, wishing everyone a Happy New Year!

Andy Mickey Choong  
Principal

# Safety for All @ Jiemin

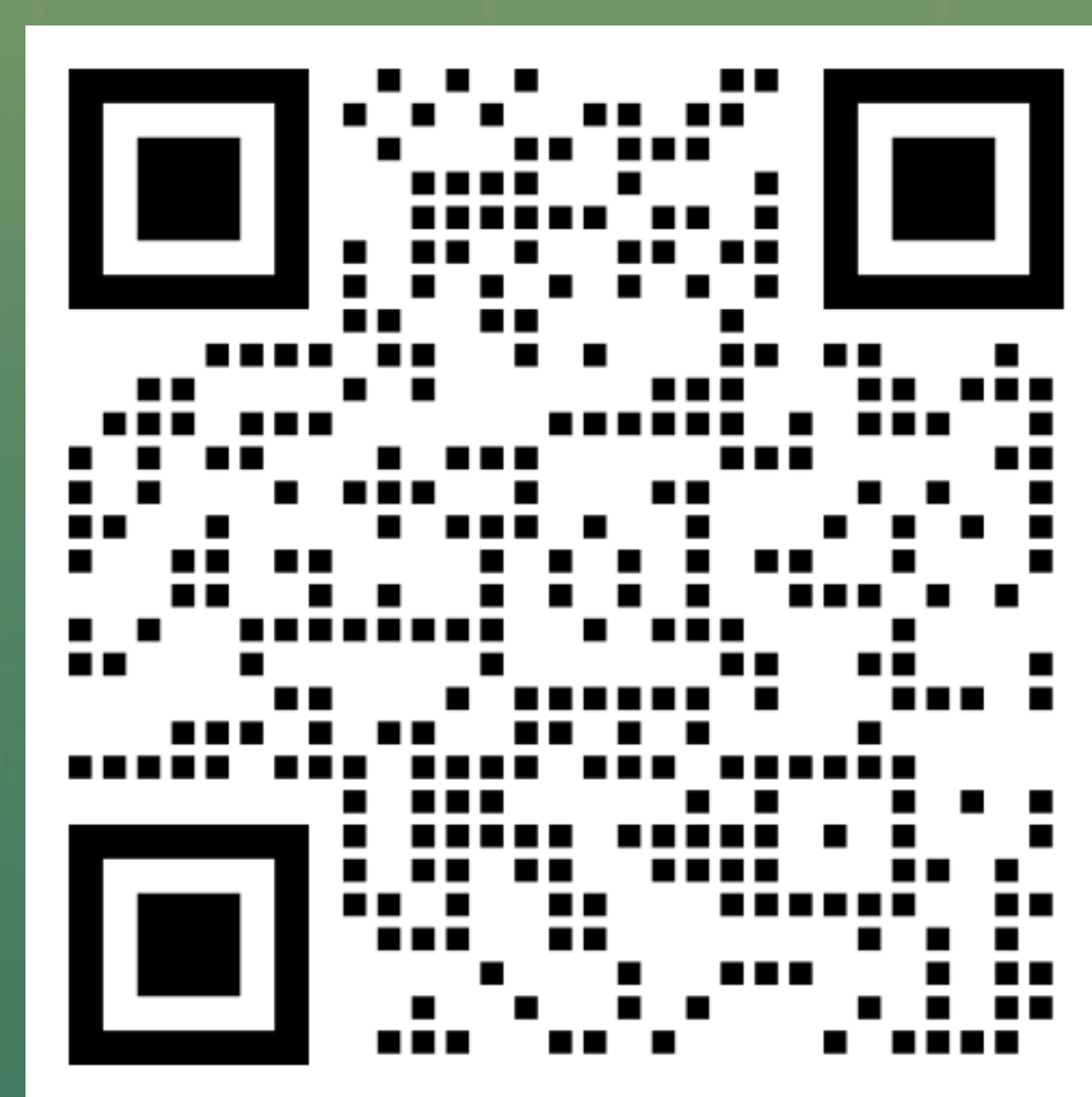
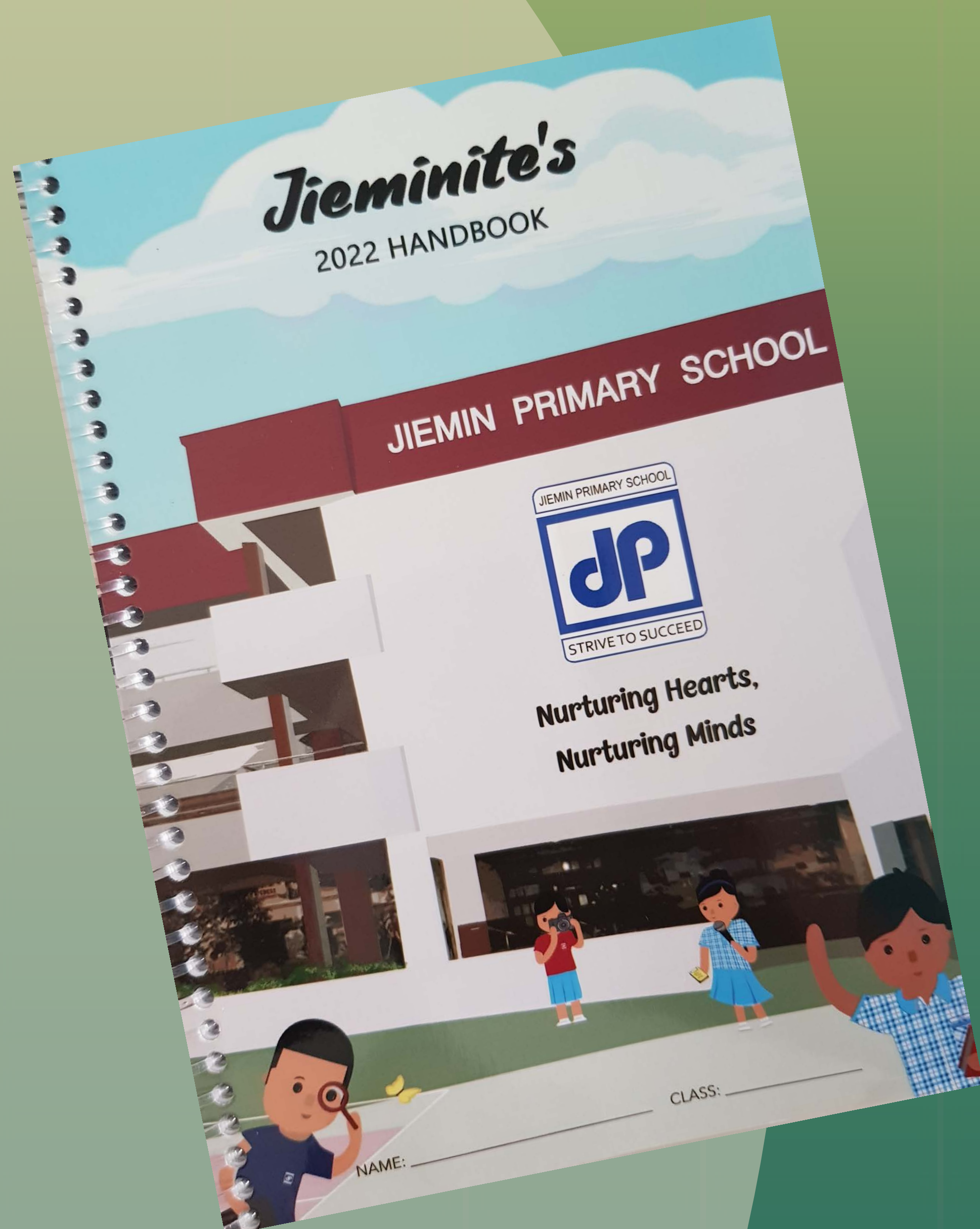
## Road Safety and Safety in the School

Traffic poses a serious threat to the safety of our pupils and other pedestrians. In Jiemin Primary School, we will always take an active approach to minimize risk.

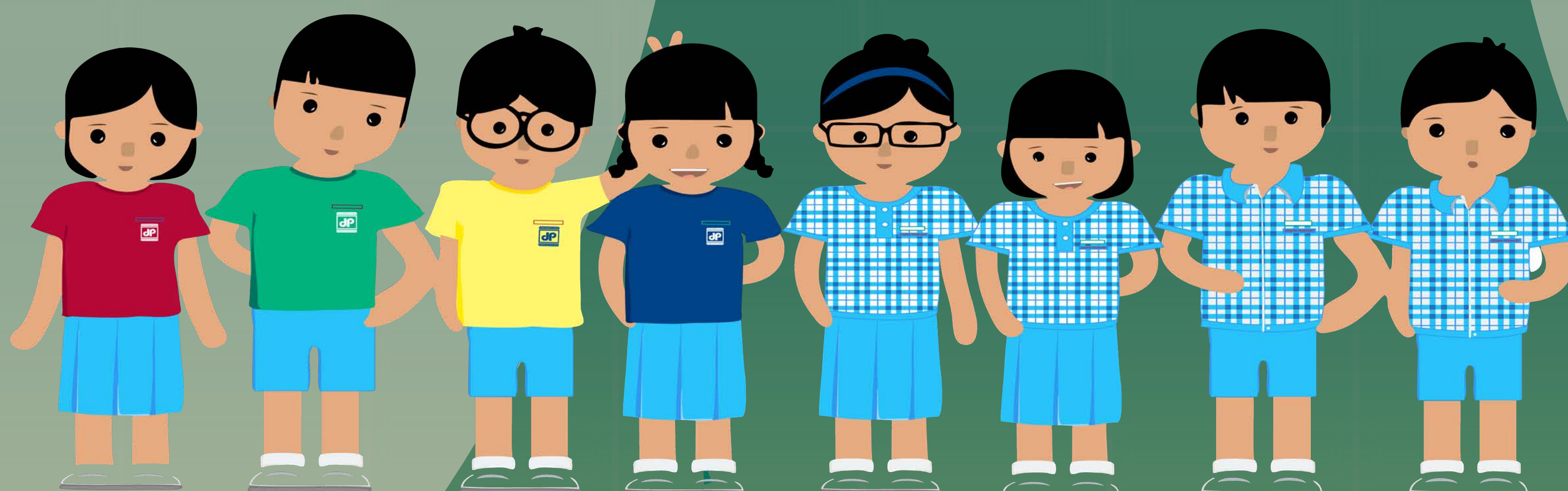
With the start of the new school year, we would like to remind for all pupils and parents travelling to and from school to practise the 'kerb' drill at all times when crossing the roads.

We would like to take this opportunity to remind parents who drive their child/children to school to take note of the following:

- Kindly co-operate with the road marshals in school at all times.
- Please do not drop off / pick up your child along Yishun Street 71 and Yishun Ring Road. Please refrain from this as this increases unnecessary delay and safety risks for your child and other road users.
- For parents who do not wish to drop off your child in school, you may choose any one of the nearby car parks near the school.
- Do refer to Jieminite's 2022 Handbook on pages 6 and 7 for more information on Road Safety and School Safety or scan the QR code below:



Pages 6 and 7 of  
Jieminite's 2022  
Handbook



# Safety for All @ Jiemin

## Covid-19 Safety Management Measures

### Mask Policy



### Trace Together Token (TT)



### Wipe Down Routine



### Temperature Taking



### Hand Washing



### Social Responsibility



### Safe Distancing in the Canteen



Refer to Jieminite's 2022 Handbook on pages 8 and 9 for more information on Routine Safe Management Measures or scan the QR code on the right.



**Pages 8 and 9 of Jieminite's 2022 Handbook**



# Welcoming Our Primary 1 Jieminites in 2022



Our Principal, Mr Choong, welcoming our eager P1 students



Excited Jieminites and their parents!



Getting ready for our classroom activities!



Participating in fun activities in class



Getting some help from my teacher!



'Learning by Doing' choosing and buying canteen food



"My yummy and healthy chicken rice from the school canteen!"



Enjoying our food with our new classmates during recess!



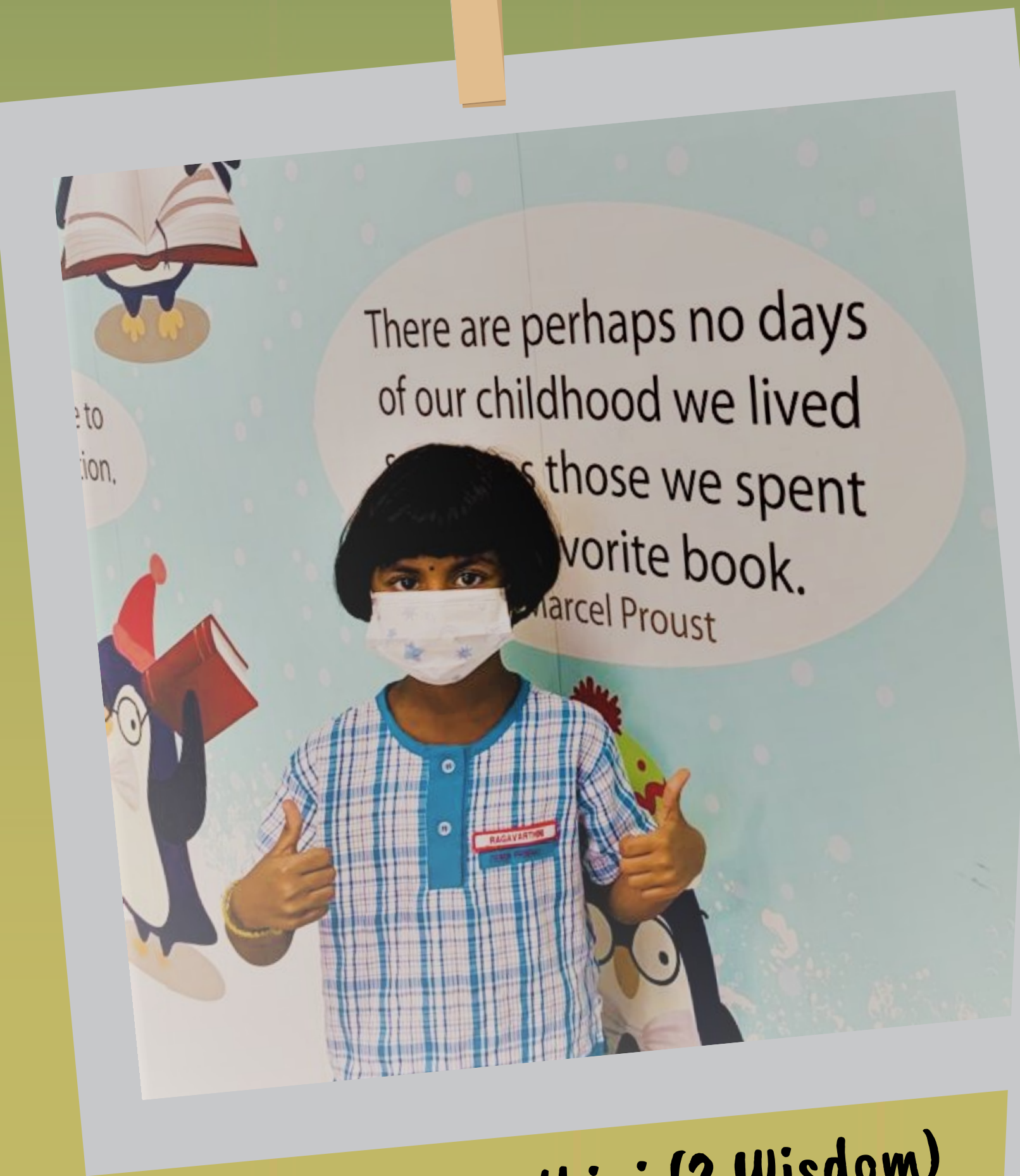
Jieminites displaying their work with pride



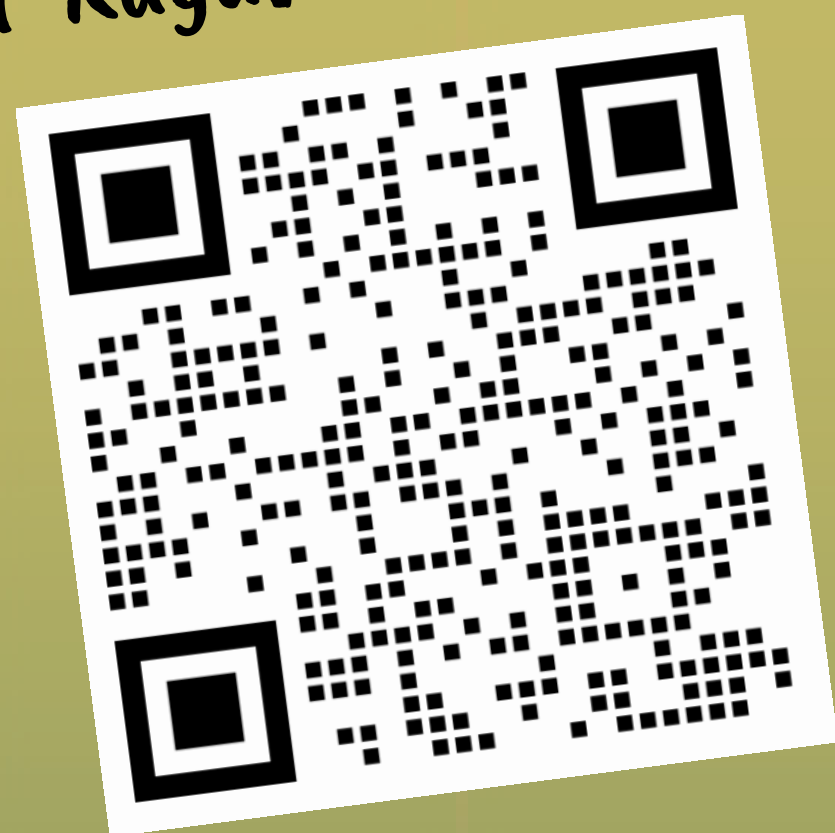
"We can't wait to tell our parents about our first day at school!"

# Our First Day of School

We are happy to welcome other Jieminites on their first day of school. Scan the QR codes below to know more of their experience during their holidays and their hopes for 2022.



Anbalagan Ragavarthini (2 Wisdom)



Humairah Binte Hafiz (3 Care)



Syed Shameel (6 Diligence)



Ma Jie Xi (4 Care)



Ethan Ng Jun Kai (5 Diligence)





# School Calendar 2022

Date	Activities/ Events
1 Jan (Sat)	Public Holiday
3 Jan (Mon)	Off-in-lieu for New Year's Day
4 Jan (Tue)	Term 1 2022 starts (Primary 1 only)
5 Jan (Wed)	Term 1 2022 starts (All level)
8 Jan (Sat)	P2 ePTM (Parent-Teacher Meeting)
15 Jan (Sat)	P3 & P4 ePTM (Parent-Teacher Meeting)
17 Jan (Mon)	Start of CCA
22 Jan (Sat)	P5 & P6 ePTM (Parent-Teacher Meeting)
25 Jan (Tue)	P1 Photo-taking for EZ-link card
26 Jan (Wed)	P6 Photo-taking for EZ-link card
1 Feb (Tue)	Chinese New Year (1 <sup>st</sup> Day)
2 Feb (Wed)	Chinese New Year (2 <sup>nd</sup> Day)
11 Feb (Fri)	P3 MTL activities (after curriculum time)
16 Feb (Wed)	Total Defence Day Commemoration
28 Feb (Mon) to 4 Mar (Fri)	P6 WA Week
12 Mar (Sat)	Start of Term 1 school holiday
14 Mar (Mon) to 15 Mar (Tue)	Peer Support Leaders Training (during school holiday) P6 Cohort Activity (during school holiday)

## SPECIAL ACKNOWLEDGEMENT

Mr Ravindran Kanna - HOD CCE  
 Mdm Norhayati - Assistant Year Head P1  
 Mdm Jayasree - Year Head P2  
 Mdm Maslinda - Year Head P3, P4  
 Mr Desmond Seah - HOD Aesthetics  
 Mdm Muliana - Senior Teacher, Malay Language

## JIEMINITE LINK PUBLICATION TEAM

Ms Nur Fatimah  
 Mr Muhammad Firdaus  
 Mdm Magdalene Yeo  
 Miss Aliya Maisarah