



25 June 2018

### **Greetings**

Welcome back to Term 3 of Year 2018. I hope that you have had a well-rested short term break with your child/ward. In term 3, things may move a little faster as the pupils would have gotten used to their daily routines and the teachers will be able to focus much more on building the Joy of Learning in the various subjects in the classrooms.

In school, we have been equipping our pupils with the necessary social and emotional competencies and social skills for our pupils to help cope with the volatile environment. Staying ahead in a rapidly-changing world will require more than just academic knowledge. Our young need to be able to respond to the new challenges and prospects around them as they explore their way forward.

As parents, I hope that you can come on board this journey with us and help our children not to be overly-dependent and be able to stand up to challenges. These are skills needed to thrive in a rapidly-changing economy. I have shared with you some videos available on SCHOOLBAG weblinks in *Annex B* on how we can help our children to learn from challenging situations and setbacks both in school and at home. I hope you will find them useful.

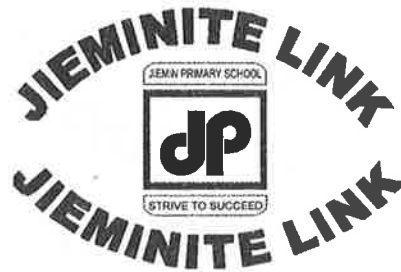
This notification covers the following matters:

1. A Warm Welcome to Our New Staff
2. Safety and Health Matters
3. Peer Support and Social Skills
4. Singapore Student Learning Space
5. Primary One Registration
6. Singapore Thailand Enhanced Partnership 2018 (STEP)
7. Change in Time-table for Semester 2
8. School Calendar for Term 3 2018

#### **1. A Warm Welcome to the New Staff**

We extend a warm welcome to the following staff members who had joined our Jiemin family in January this year.

Mdm Lau Xin Wei – Chinese Teacher



## **2. Safety and Health Matters**

### **Lock Down Drill on 26 June 2018**

As part of the school's security preparedness exercise, we will be holding our first lock down drill on 26 June 2018 (Tuesday) for the **first 2 periods (7.45 am to 8.45am)**. The goal of this drill is to familiarise our Jieminites with the necessary procedures and equip them with the necessary actions to take should there be a security incident within the school premise. We hope this exercise will help to remind our pupils the need to always be vigilant in the event of a security incident.

### **3. Peer Support and Social Skills Lessons in Jiemin Primary School**

You would have heard from your child about our school's peer support and social skills lessons. All our Jieminites will learn how to interact politely and effectively in a variety of situations using good social skills, and offer support and assist their peers whenever the need arises. These skills learned will give our Jieminites an edge over others and better prepare them for the future and for life. When practised in different learning contexts and teachable moments in school and at home, our students may gradually internalise these mindsets and skills as natural resources they can tap on whenever they face any challenge. We hope that, as parents, you will encourage them to practise these skills constantly so that they can become better and more confident in displaying these skills and competencies when the need arises.

### **4. Singapore Student Learning Space**

As mentioned in our last letter sent to you on 27 April 2018, as part of its commitment to nurturing future-ready learners, the Ministry of Education had announced that all students in Singapore schools will be supported in their learning by the Singapore Student Learning Space (SLS), an online learning platform that contains curriculum-aligned resources and learning tools.

With the SLS, students will be able to learn better through the use of technology. Students will be able to learn anytime, anywhere, and at their own pace, whether independently or with their peers. Teachers will also be able to use the SLS to complement their classroom teaching, further enriching students' learning experience



SLS is being rolled out to all schools in phases. The students in our school have been given their accounts. Our teachers will guide your child in activating the SLS account and using the learning platform. We look forward to your strong support as we help our students strengthen their learning through the SLS.

#### **5. 2018 Primary One Registration Exercise for admission to Primary One classes in 2019**

Children born between **2 January 2012** and **1 January 2013 (both dates inclusive)** can participate in the 2018 Primary One Registration Exercise for admission to Primary One classes in 2019. Parent should refer to the registration phases and procedures to find out which phases their children are eligible for, how to register and the documents required for registration under the following URL:

<https://www.moe.gov.sg/admissions/primary-one-registration/phases>.

Parents registering their Singapore Citizen (SC) / Permanent Resident (PR) child under the **Phase 1** are not required to go to the school as application will be done through the elder sibling in the school. Please ensure you have filled in and submitted the 2018 Primary ONE Registration Exercise Application Form. The registration of Singapore Citizen (SC) / Permanent Resident (PR) child under the **Phase 2A (1) to Phase 2C(S)** is to be done at the school of choice by the parent.

If you need more information regarding the Primary One Registration, do refer to the following URL:

<https://www.moe.gov.sg/admissions/primary-one-registration>

#### **6. Singapore Thailand Enhanced Partnership (STEP)**

The Singapore Thailand Enhanced Partnership (STEP) programme is a government to government initiative to improve our bilateral relationship with Thailand. The programme consists of two parts; camp and school immersion. Thailand and Singapore have taken turns to host the STEP programme and it has been on-going since 2007. This year, it is our school's turn to host the STEP programme for a group of 8 primary school pupils and 2 teachers from Thailand. It is a rare opportunity for some of our pupils to forge a trans-boundary friendship with our Thai partners through outdoor adventures and learning journeys. The pupils from Phyathai School in Thailand will attend lessons with some of our Primary Five pupils to allow them to experience the daily life of Singaporean students. Our pupils will also be visiting some places of interests with our Thai friends and help them to learn more about our way of life in Singapore. We are looking forward to welcoming them to Jiemin Primary School and also an enriching week with these pupils from 1 July to 7 July 2018.



#### **7. Time-Tabling changes for Semester 2**

There will be changes in the pupils' time-table and also staff deployment in Semester 2 as some of our teachers will be away for long term professional development courses and also maternity leave. As such, the school has made arrangements for other trained staff to take over the existing teachers' load so as to ensure that our pupils will continue to learn effectively. Should you have any concerns regarding the new arrangement, you may contact the Year Heads of the respective levels so that they may assist you.

#### **8. School Calendar**

Please refer to Annex A for more information pertaining to school events and activities in Term 3.

We hope to work closely with you in this coming year and look forward to your continued support.

Yours faithfully,

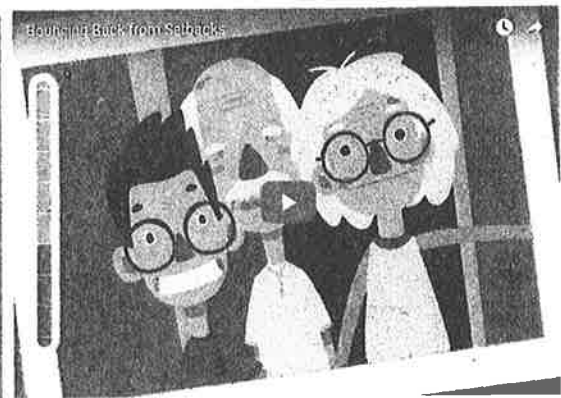
A handwritten signature in black ink, appearing to read 'P. Cheah'.

---

Miss Cheah Poh Lian  
Principal

**New**

**Videos of Bobby**  
(on stress management)

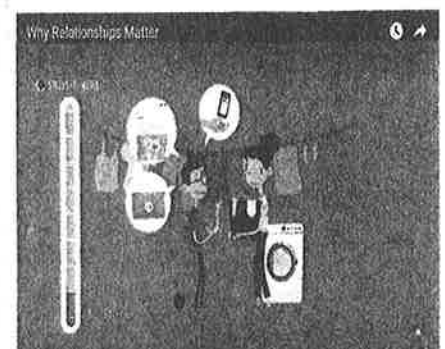


3 short videos on Bobby that highlight:

- how our children can learn from challenging situations and setbacks both in school and at home
- how stress can be mitigated if there is support from friends and family.

• Videos available on SCHOOLBAG, weblinks:

- <https://www.schoolbag.sg/story/facing-new-and-unfamiliar-situations>
- <https://www.schoolbag.sg/story/bouncing-back-from-setbacks>
- <https://www.schoolbag.sg/story/why-relationships-matter>



**School Calendar for Term 3 (25 June to 31 August 2018)**

ANNEX A

| Date                          | Activities/ Events   |
|-------------------------------|--|
| 25 June (Mon)                 | First day of school for Term 3   |
| 2 July (Mon)                  | Youth Day School Holiday (All pupils <u>do not</u> need to report to school)   |
| 16 July (Mon) – 17 July (Tue) | P6S / F Preliminary EL / MT Oral   |
| 2 Aug (Thu)                   | P6S / F Preliminary EL / FEL Paper 1   |
| 3 Aug (Fri)                   | P6S Preliminary MT Paper 1   |
| 6 Aug (Mon)                   | P6S Preliminary HMT<br>P5 Camp @ Changi Coast  |
| 7 Aug (Tue)                   | P5 Camp @ Changi Coast   |
| 9 Aug (Thu)                   | National Day ( <i>Public Holiday</i> )   |
| 10 Aug (Fri)                  | School Holiday (All pupils <u>do not</u> need to report to school)   |
| 13 Aug (Mon)                  | P5S CA HMT Paper 2   |
| 13 Aug (Mon) – 15 Aug (Wed)   | P3 CA MT Paper 2   |
| 20 Aug (Mon)                  | P3 CA EL Paper 2<br>P4 CA EL Paper 2<br>P5S CA EL Paper 2<br>P5F CA FEL Paper 2<br>P6S Preliminary EL Paper 2<br>P6F Preliminary FEL Paper 2 |
| 21 Aug (Tue)                  | P6S Preliminary EL Listening Comprehension<br>P6F Preliminary FEL Listening Comprehension  |
| 22 Aug (Wed)                  | Hari Raya Haji ( <i>Public Holiday</i> )   |
| 23 Aug (Thu)                  | P6S Preliminary MT Listening Comprehension<br>P6F Preliminary FMT Listening Comprehension  |
| 24 Aug (Fri)                  | P4 CA MT Paper 2<br>P5S CA MT Paper 2<br>P5F CA FMT Paper 1<br>P6S Preliminary MT Paper 2  |

**Key**

|       |   |                        |    |   |                      |
|-------|---|------------------------|----|---|----------------------|
| SA1/2 | : | Semestral Assessment 1 | CA | : | Continual Assessment |
| EL    | : | English Language       | CL | : | Chinese Language     |
| MTL   | : | Mother Tongue Language | ML | : | Malay Language       |
| HMT   | : | Higher Mother Tongue   | TL | : | Tamil Language       |
| HA    | : | Holistic Assessment    |    |   |                      |

**School Calendar for Term 3 (25 June to 31 August 2018)**

| Date                       | Activities/ Events   |
|----------------------------|--|
|                            | P6F Preliminary FMT Paper 1  |
| 27 Aug (Mon)               | P3 CA Mathematics<br>P4 CA Mathematics<br>P5S CA Mathematics<br>P5F CA Foundation Mathematics<br>P6S Preliminary Mathematics<br>P6F Preliminary Foundation Mathematics |
| 28 Aug (Tue)               | P3 CA Science<br>P4 CA Science<br>P5S CA Science<br>P5F CA Foundation Science<br>P6S Preliminary Science<br>P6F Preliminary Foundation Science                         |
| 31 Aug (Fri)               | Teachers' Day School Holiday (All pupils <u>do not</u> need to report to school)   |
| 1 Sep (Sat) to 9 Sep (Sun) | Start of Term 3 School Holidays  |

**Remarks**

**Primary 1 and 2 Holistic Assessment**

Please refer to Notification Letter **062/2018**, issued on 21 May 2018, on **Holistic Assessment Schedule for P1-P2 Pupils (Semester 2)**. This letter has also been uploaded on our School's Website under the Parents' Link.

**Key**

|       |   |                        |    |   |                      |
|-------|---|------------------------|----|---|----------------------|
| SA1/2 | : | Semestral Assessment 1 | CA | : | Continual Assessment |
| EL    | : | English Language       | CL | : | Chinese Language     |
| MTL   | : | Mother Tongue Language | ML | : | Malay Language       |
| HMT   | : | Higher Mother Tongue   | TL | : | Tamil Language       |
| HA    | : | Holistic Assessment    |    |   |                      |